

VCXO Specification Model V763

CONNOR WINFIELD

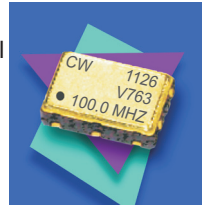


2111 Comprehensive Drive
Aurora, Illinois 60505
Phone: 630-851-4722
Fax: 630-851-5040
www.conwin.com

US Headquarters:
630-851-4722
European Headquarters:
+353-61-472221

Description:

The Connor-Winfield, RoHS compliant, V763 is a 3.3V Voltage Controlled Crystal Oscillator (VCXO) with LVPECL differential outputs and enable/disable function. The V763 is designed for use with applications utilizing a PLL system requiring low jitter and tight frequency stability. The surface mount package is designed for high-density mounting and is optimum for mass production.



Features:

- 3.3 Vdc Operation
- Absolute Pull Range (APR): ± 100 ppm
- Temperature Range: -40 to 85°C
- Low Jitter: <0.4 ps RMS Typical
- LVPECL Differential Outputs
- 5x7 mm SMT Package
- Tri-State Enable/Disable, Pad 2
- Tape and Reel Packaging
- RoHS Compliant / Lead Free

Absolute Maximum Ratings

Parameter	Minimum	Nominal	Maximum	Units	Notes
Storage Temperature	-55	-	125	$^{\circ}\text{C}$	
Supply Voltage (Vcc)	-0.5	-	4.6	Vdc	
Control Voltage (Vc)	-0.5	-	Vcc + 0.5	Vdc	

Operating Specifications

Parameter	Minimum	Nominal	Maximum	Units	Notes
Center Frequency: (Fo)	19.44	-	110	MHz	
Operating Temp Range:	-40	-	85	$^{\circ}\text{C}$	
Supply Voltage: (Vcc)	3.135	3.3	3.465	Vdc	
Supply Current : (Icc)	-	-	100	mA	
Jitter:					
Period Jitter	-	-	5.0	ps RMS	
Integrated Phase Jitter	-	0.4	1.0	ps RMS	1
Typical SSB Phase Noise @ Fo = 100 MHz					
@ 10 Hz offset	-	-55	-	dBc/Hz	
@ 100 Hz offset	-	-92	-	dBc/Hz	
@ 1 KHz offset	-	-118	-	dBc/Hz	
@ 10 KHz offset	-	-140	-	dBc/Hz	
@ 100 KHz offset	-	-143	-	dBc/Hz	
@ 1 MHz offset	-	-150	-	dBc/Hz	
Start-Up Time	-	-	10	ms	

Input Characteristics

Parameter	Minimum	Nominal	Maximum	Units	Notes
Control Voltage Range (Vc)	0.3	1.65	3.0	Vdc	
Absolute Pull Range (APR)	± 100	-	-	ppm	2
Monotonic Linearity	-10	-	10	%	
Input Impedance	-	60K	-	Ohm	
Modulation Bandwidth (3dB)	25	-	-	KHz	
Enable Input Voltage (High) (Vih)	2.275	-	-	V	3
Disable Input Voltage (Low) (Vil)	-	-	1.68	V	3

LVPECL Output Characteristics

Parameter	Minimum	Nominal	Maximum	Units	Notes
Load (CL) -	-	50	-	ohm	
Voltage (High) Voh	2.275	-	-	V	
(Low) Vol	-	-	1.68	V	
Duty Cycle at 50% Level	45	50	55	%	
Rise / Fall Time: 20% to 80%	-	0.6	1.5	ns	

Package Characteristics

Package Hermetically sealed ceramic surface mount package with case ground metal cover.

Notes:

- BW= 12 KHz to 20 MHz,
- Absolute Pull Range (APR) is the minimum guaranteed pull range of the VCXO under all conditions over lifetime operation including calibration @ 25°C , frequency stability vs. the change in temperature, frequency vs. change in supply voltage, frequency vs. change in load, shock and vibration and 10 years aging. The APR is referenced to (Fo). Positive transfer function.
- Oscillator output is enabled with no connection on pad 2.

Specifications subject to change without notice. All dimensions in inches. © Copyright 2011 The Connor-Winfield Corporation



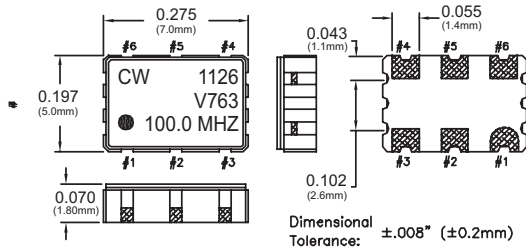
Bulletin **VX575**
Page **1 of 2**
Revision **03**
Date **10 Jun 2011**



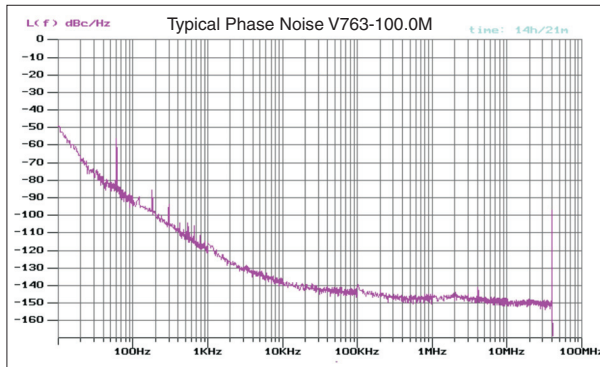
Environmental Characteristics

Vibration: Vibration per Mil Std 883E Method 2007.3 Test Condition A.
Shock: Mechanical Shock per Mil Std 883E Method 2002.4 Test Condition B.
Soldering Process: RoHS compliant lead free. See soldering profile on page 2.

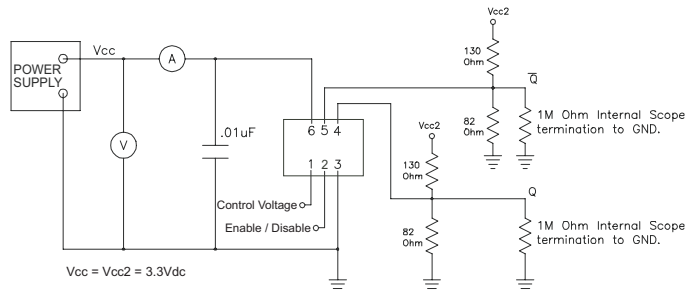
Package Layout



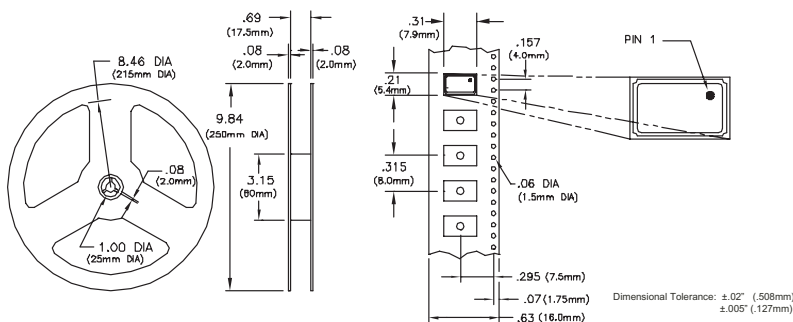
Typical Phase Noise



Test Circuit



Tape and Reel Dimensions

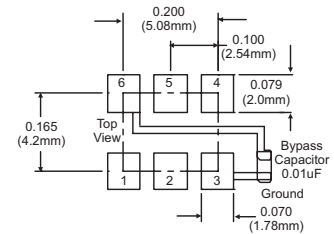


MEETS EIA-481A AND EIAJ-1009B
2,000 PCS/REEL

Ordering Information

V763 - 100.0M
VCXO SERIES CENTER FREQUENCY

Suggested Pad Layout



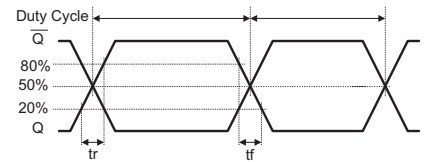
Pad Connections

- 1: Control Voltage (Vc)
- 2: Enable / Disable
- 3: Ground
- 4: Output Q
- 5: Output Q-bar
- 6: Supply Voltage (Vcc)

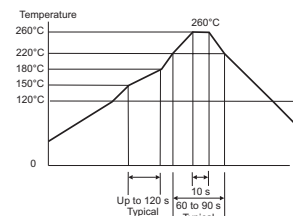
Enable / Disable Function

Function: Outputs
High or Open Enabled
Low Disabled (High Impedance)

Output Waveform



Solder Profile



Meets IPC/JEDEC J-STD-020C

Bulletin **VX575**
Page **2 of 2**
Revision **03**
Date **10 Jun 2011**